



InvestEU Advisory Hub – Social Investment and Skills Window

# SOCIAL INCLUSIVE FINANCE TECHNICAL ASSISTANCE (SIFTA)

## FINANZA INCLUSIVA, ECONOMIA SOCIALE E TERRITORIO

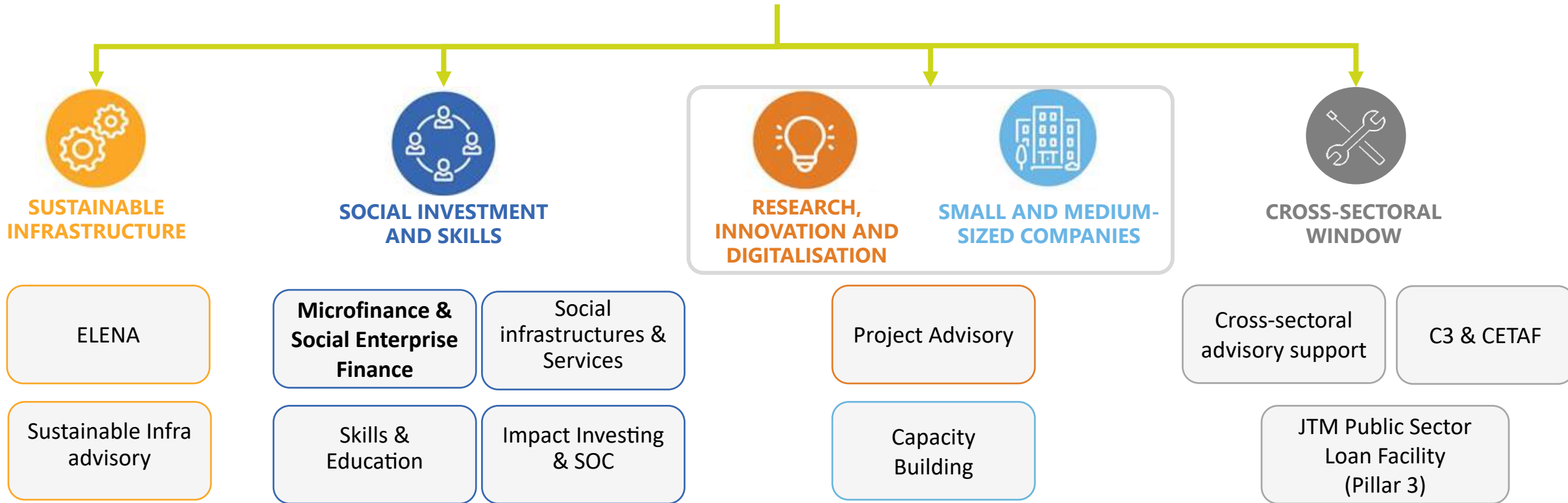
### 5 DICEMBRE 2022, CAGLIARI

# 1. SIFTA – Programme Snapshot

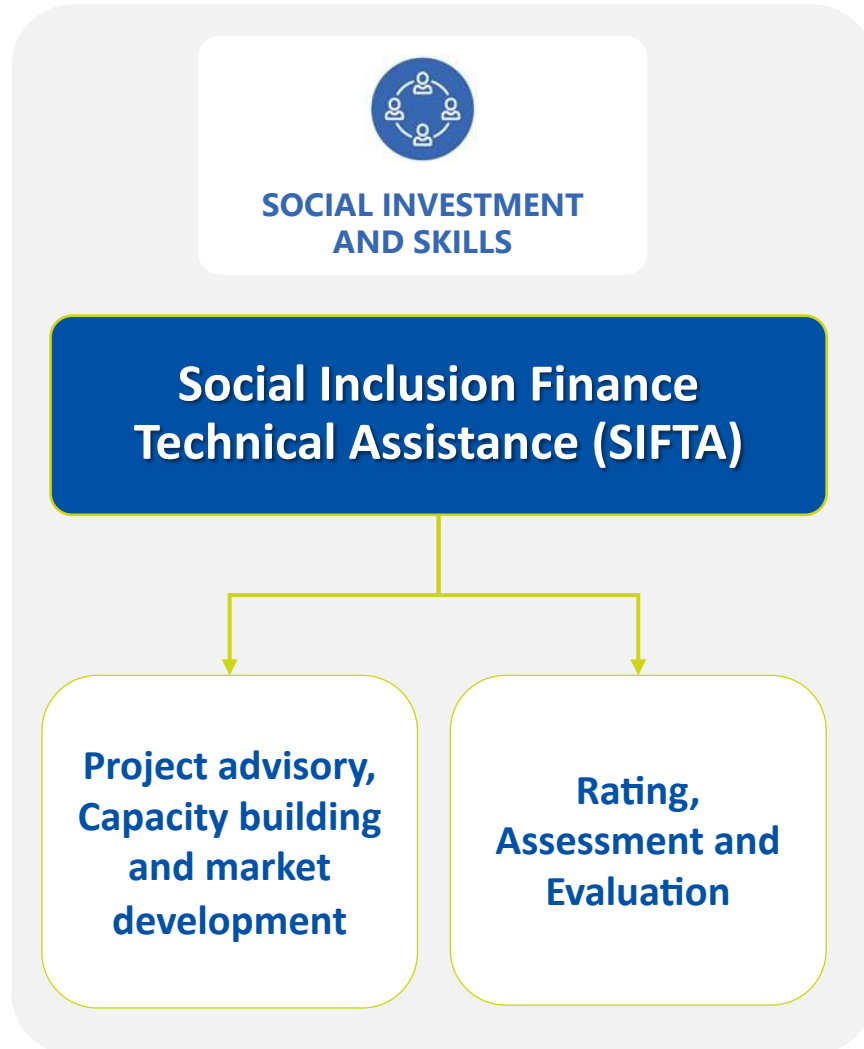
# About the Invest EU Advisory Hub



## The InvestEU Advisory Hub



# SIFTA - Reinforcing the European Microfinance and Social Enterprise Finance Sectors



- EIB is in charge of managing the SIFTA initiative which provides **targeted capacity building, project advisory** and **market development support** to financial intermediaries active in the microfinance and/or social entrepreneurship spaces
- Continuation and enhancement of the EU Programme for Employment and Social Innovation (EaSI) Technical Assistance

# SIFTA – What We Bring Together



Geographical eligibility | **EU-27**



Timeframe of the initiative | **Initial budget available until December 2024**



Beneficiaries | **Microfinance providers** such as banks and non-bank microfinance institutions & **social enterprise finance providers**, such as investment funds, impact investors, incubators, accelerators (among others) that offer or are in the process of widening their scope with a view to providing accompanying financial support to social enterprises.

# SIFTA – How We Do It

## Service Providers



## Project Advisory, Capacity building and Market Development services

- Frankfurt School of Finance and Management (FS) – Consortium Leader
- Microfinance Centre (MFC) – Consortium Partner
- European Microfinance Network (EMN) – Consortium Partner

## Rating, Assessments and Evaluation services



- MF Rating – Provider of Institutional Assessments, Rating and Evaluations





# SIFTA – Get In Touch With Us



Information about SIFTA Services can be found here:  
[Social Inclusive Finance Technical Assistance \(SIFTA\) \(eib.org\)](https://www.eib.org/sifta)



Applicants of microfinance and social enterprise finance providers can apply for specific SIFTA services by sending EIB an email at [sifta@eib.org](mailto:sifta@eib.org)



A *Request for Services* template will be sent to the beneficiaries to formally apply to the specific services.



*The authors take full responsibility for the contents of this report. The opinions expressed do not necessarily reflect the view of the Advisory Hub, nor the European Investment Bank, nor the European Commission*

## **Social Inclusive Finance Technical Assistance (SIFTA)**

For more information, about:

Project Advisory, Capacity building and Market Development services, contact:  
[sifta@fs.de](mailto:sifta@fs.de)

Rating, Assessments and Evaluation services, contact:  
[info@mf-rating.com](mailto:info@mf-rating.com)



**European  
Investment  
Bank**

*The EIB bank*

